

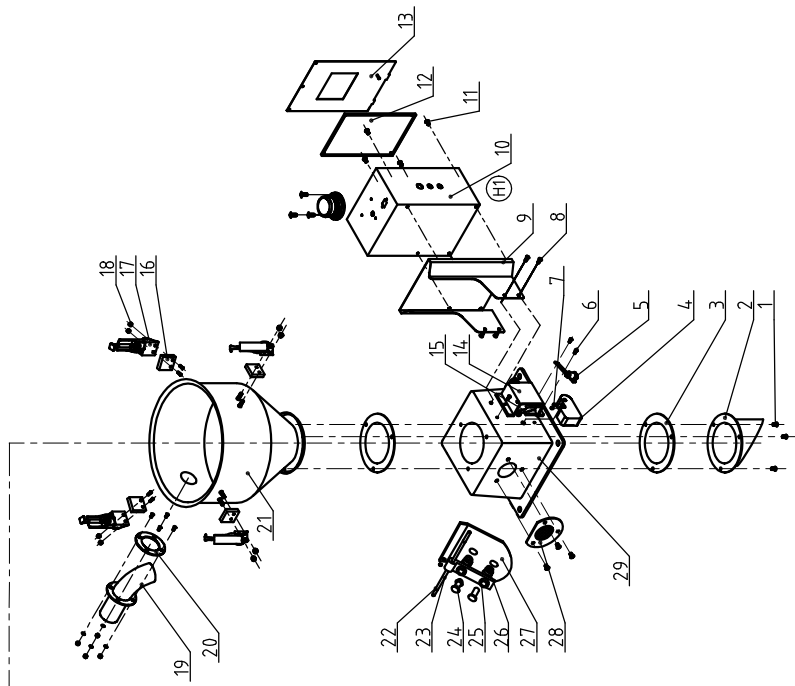
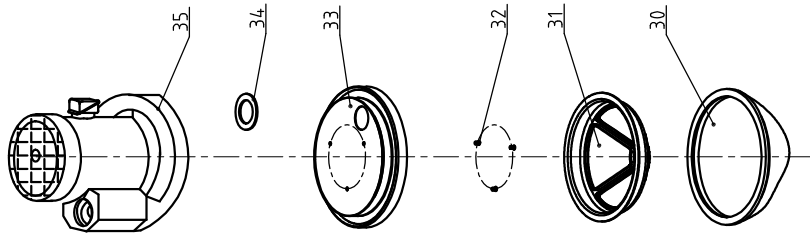
Technical req:

1. Main performance parameters:
  - a. Max. conveying ability: 200kg/hr(Standard test bulk density 0.65kg/L);
  - b. The blower power is 0.375kW, and the hourly air quantity is 120m<sup>3</sup>
  - c. Machine power: 3 phase,4.00V/At, 50Hz;
  - d. Effective hopper capacity: 3L
2. Assembly req:
  - a. When assembly, the gap between the adjustable discharge plate and the discharge port is about 8mm.

Notes: Parts withx are easily broken parts.

35	BM30020500150	Blower RB-205(SAL-430 3ø230V/400V/50/60HZ white
34	YR1004.0000000	Motor suction port fastener 4.00A
33		Hopper cover
32	YW61061601200	Inner hexagon cylinder screw GB/T170.1 M6x16-12.9-Longzine
31	YR4.00030001000	Split washer of filter cloth SAL-30-A-08(PBT-30% Glass fiber) (has mould)
30	BP82003000044	Cloth bag SAL-3U-A-07 Ver.G*
29	BA1004.0000260	Square base thin type SMH-6L-A-10 (painted)
28	YR4.00024.00100	Vacuum hopper plastic exhaust windowSMH-6L-A-32 ver.(white) (has mould)
27	YW10000000100	Stainless steel discharging plate SMH-6L-A-19(SUS201) Ver.C
26	YW01033000000	Discharging plate spring
25	BW20000100010	Aluminum accessories SAL(processed)SMH-6L-A-16(has mould)
24	YW09061700000	Discharge plate rivet SMH-6L-A-17
23	BH10061400040	Iron rod SMH-6L-A-14 (zinc plated) 0.04kg
22	YW66000500000	E Type washer E5
21		Storage tank
20	YR10061200000	Suction pipe round fastener SAL-6U/12U (has mould)
19		Inlet pipe 1.25"
18	YW64.04.0700100	Non-mental inserted hex. lock nut GB/T889.1 M4
17	YW020030004.00	Adjustable snap hook SAL-6U-A-35
16	YR4.00006008000	Spring buckle plastic pad SAL-6U(white) (has mould)
15	YE14.511200000	Limit switch YBLXW-5/11G2
14	YR4.03309000000	Microswitch box SAL-330-A-09(plastics)(white) (has mould)
13		Control box cover
12		Elec. mount plate
11	YW63061000000	Cross recessed pan head screw GB/T-818 M6x10-Longzine
10		Control box body
9		Control fixed plate
8	YW62061000000	Cross socket large flat head screw JIS1111 M6x10-Longzine
7	YW68005500000	Inner hex. flat end lock screw GB/T777 M5x5-Longzine
6	YW6304.1200100	Cross socket pan head screw GB/T-818 M4x12-Longzine
5	BH13060100310	Ejector pin assembly
4	YR20602100000	Counter weight hammer SMH-6L-A-21(ver.EII zinc alloy weight228±5G)
3	YR10000000600	White iron hopper fastener (has mould)
2	BL20333600020	Stainless steel suction hopper SAL-330/360(has mould)SAL-330-A-07
1	YW62052000000	Cross socket large flat head screw JIS1111 M5x20-Longzine

No.	Material number	Name
Title SAL-430		
Drawing No.		
Scale 1:12		
Num 1		
Mat. Assembly		
Surface Req.		
Material No.		
信易电热机械股份有限公司 Shini Plastics Technologies, Inc.		
Mark	Before Mod.	After Mod.
	Modified By	Modified Date
	Checked By	Checked Date
	Proofread By	Proofread Date
	Designer	Designer
	Drawer	Drawer
	Version	Version
	App. by	App. by
	Modify Date	Modify Date



35	BM30031000050	Blower RB-205(SAL-460 for 3 phase 230V/400V/50/60HZ white
34	YR1004.0000000	Motor suction port fastener 4.00A
33		Hopper cover
32	YW61061601200	Inner hexagon cylinder screw GB/T70.1 M6x16-12.9-Longzine
31	YR4.00060000000	Split washer of filter cloth SAL-30-A-08(PBT-30% Glass fiber) (has mould)
30	BP82006000044	Cloth bag SAL-6U(270x90x95)*
29	BA1004.6000060	Square base thick type SAL-460-A-18 ( painted)
28	YR4.00024.000100	Vacuum hopper plastic exhaust window SMH-6L-A-32 ver.0(white) (has mould)
27	YW10000000100	Stainless steel discharging plate SMH-6L-A-19(SUS201) Ver.C
26	YW01033000000	Discharging plate spring
25	BW20000100010	Aluminum accessories SAL(gross)SMH-6L-A-16(has mould)
24	YW09061700000	Discharge plate rivet SMH-6L-A-17
23	BH10061400040	Iron rod SMH-6L-A-14 ( zinc plated) 0.04kg
22	YW66000500000	E type washer E5
21		Storage hopper
20	YR10061200000	Suction pipe round fastener SAL-6U/12U ( has mould)
19	BL32000600020	Inlet pipe
18	YW64040700100	Non-mental inserted hex. lock nut GB/T889.1 M4
17	YW02003000400	Adjustable snap hook SAL-6U-A-35
16	YR4.0006000800	Spring buckle plastic pad SAL-6U(white) (has mould)
15	YE14511200000	Limit switch YBLXW-5/11G2
14	YR4.03309000000	Microswitch box SAL-330-A-09(plastics)(white) (has mould)
13		Control box cover
12		Elec. mount plate
11	YW63061000000	Cross recessed pan head screw GB/T-818 M6x10-Longzine
10		Control box body
9		Control fixed plate
8	YW62061000000	Cross socket large flat head screw JIS1111 M6x10-Longzine
7	YW68005500000	Inner hex. flat end lock screw GB/T77 M5x5-Longzine
6	YW63041200100	Cross socket pan head screw GB/T-818 M4x12-Longzine
5	BH13060100310	Ejector pin assembly
4	YW20602100000	Counter weight hammer SMH-6L-A-2(iverE) zinc alloy weight:228-5G
3	YR10000000600	White iron hopper fastener (has mould)
2	BL20333600020	Stainless steel suction hopper SAL-330/360(has mould)(SAL-330-A-07
1	YW62052000000	Cross socket large flat head screw JIS1111 M5x20-Longzine

Title		SAL-460		Drawing No.	
Designer		Ver.		Scale	
Proofread by		Approved by		1:12	
Checked by		Modify Date		Num. 1	
Modified By		Modified Date		Mat. Assembly	
After Mod.		Before Mod.		Surface Req.	
Mark				Material No.	
信譽機械股份有限公司 SHINI Plastic Technologies, Inc.					

Technical req:

- Main performance parameters:
  - Max. conveying ability: 200kg/hr(Standard test bulk density 0.65kg/L);
  - The blower power is 0.375kW, and the hourly air quantity is 120m<sup>3</sup>;
  - Machine power: 3 phase,400V/AC,50Hz;
  - Effective hopper capacity: 3L
- Assembly req:
  - When assembly, the gap between the adjustable discharge plate and the discharge port is about 8mm.

Notes: Parts with \* are easily broken parts.